



# VIAJET 4

THE SMALLEST ROAD SWEEPER IN THE SERIES

 **FAUN**  
KIRCHHOFF GROUP

# VIAJET 4

## THE SMALLEST ROAD SWEEPER IN THE SERIES

This sweeper has been developed as an economic alternative to large compact road sweepers. The VIAJET 4 has compact dimensions on a standard chassis, is economical

to maintain and gives consistent high performance – a winner every time.

### KEY FACTS AT A GLANCE

#### Two drive concepts:

- **HYDROSTATIC (HS):**  
Possible work speed from 0.2 – 30 km/h
- **MOUNTED ENGINE:** 4 cylinder suction engine  
This has sufficient performance reserves with 2.43 litre cubic capacity and 36.5 kW at 2,500 rev/min to fulfill all requirements at a low speed range of 1,500 – 2,100 rev/min.

#### Waste container

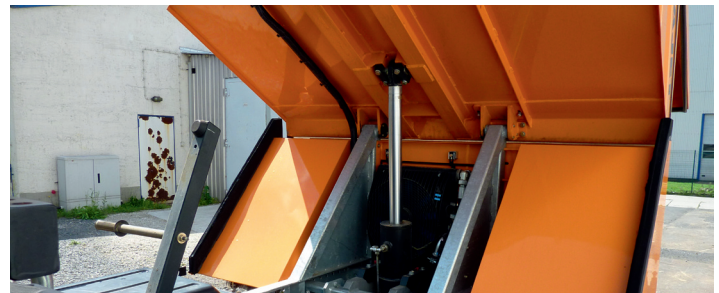
- Container tub made of stainless steel (1.4301)
- Roof area constructed of extremely light, but solid GRP material
- Load capacity of 3 t

Due to the **upward emptying system**, transferring waste from the VIAJET 4 into waste collection vehicles, containers and dump truck bodies is flexible without complicated lifting systems.

During the **sweeping process**, a tried-and-tested ventilation system is used that has the lowest emission values in its class. The aerodynamic, revised suction shaft provides the highest suction performance, so that even full 1.5 L PET bottles don't stand a chance!

The **water tank** sits between the container and the operator cab, and consequently offers noise insulation in addition to water storage and guarantees optimal axle load distribution.

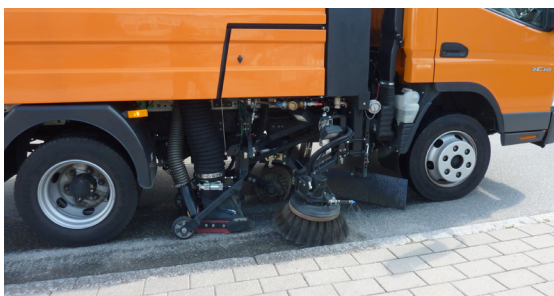
**Maintenance and service** of the VIAJET 4 is simple and convenient. All systems can be adjusted, are easily accessible and contained in the side boxes.



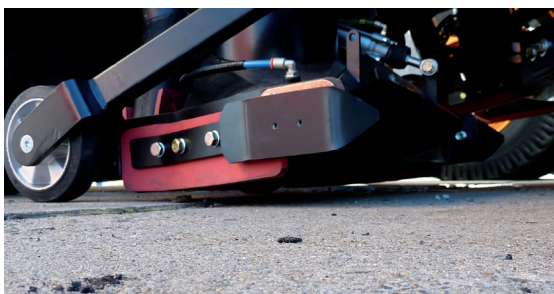
# VIAJET 4

THE SMALLEST ROAD SWEEPER IN THE SERIES

## KEY FEATURES



Additional sweeping unit on the left



Pneumatic suction mouth lift



Projected sweeper for use on both the right and left



Light manual suction system at the rear



High-pressure washer 15l/100 bar with automatic drum and spray lance

# VIAJET 4

THE SMALLEST ROAD SWEEPER IN THE SERIES

## TECHNICAL DATA

Body	VIAJET 4 HS	VIAJET 4
Container volume (m <sup>3</sup> )	4	4
Length approx. (mm)	3,340	3,340
Height approx. (mm)	1,800	1,800
Water supply approx. (l)	800	600
<b>Sweeper equipment</b>		
Suction shaft width (mm)	550	550
Curb disk sweeper on right (mm)	600	600
Feeder roller diameter (mm)	300	300
Feeder roller length (mm)	1,250	1,250
<b>Maximum sweeper width</b>		
Curb disk sweeper on right or left (mm)	1,000	1,000
Curb disk sweeper on right or left with roller (mm)	2,140	2,140
Curb disk sweeper on both sides with roller (mm)	2,800	2,800
<b>Chassis recommendation <sup>1)</sup></b>		
Mitsubishi Canter (EURO 5)	7C15	7C15
Permitted total weight (t)	7,5	7,5
Wheelbase approx. (mm)	2,750	2,750
Frame change-over approx. (mm)	1,250	1,250
CA dimension approx. <sup>3)</sup> (mm)	1,385	1,385
Engine performance (HP/kW)	145/107	145/107
<b>Example of complete vehicle <sup>1)</sup></b>		
Height approx. (mm) <sup>2)</sup>	2,500	2,500
Length approx. (mm)	5,250	5,250
Width approx. (mm)	2,050	2,050
Overhang approx. (mm)	1,385	1,385
Weight (empty) approx. (R/RL) (kg)	4,380/4,500	4,380/4,500
Rated load approx. (R/RL) (kg)	3.120/3.000	3.120/3.000

<sup>1)</sup> Deviations possible depending on special equipment

<sup>2)</sup> Without circulating blinker light (with protection + 100).

<sup>3)</sup> The permitted axle load distribution is to be determined depending on the weight variant of the back axle unit. Extra space for exhaust and suction systems are to be considered.

**Subject to technical changes without notice**